

# Additional Petrographic Services

## Photomicrography, Optical Microscopy, XRD, XRF, & SEM-EDS

Photomicrographs of Your Thin or Polished Sections: \$10/per set per sample

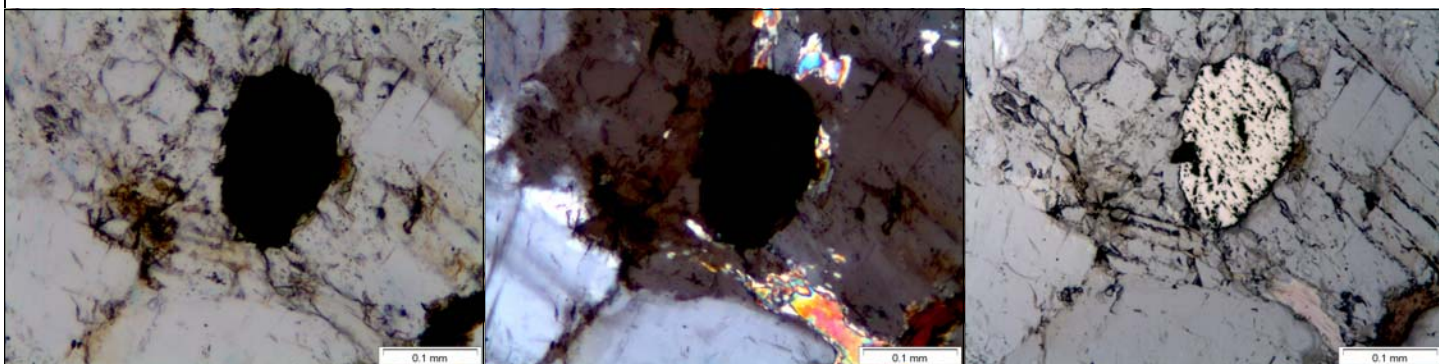
For an additional \$10, you can request photomicrographs of your thin or polished sections in a CD, taken by using high-resolution, latest-model, state-of-the-art digital cameras attached to research-grade petrographic microscopes. At least three sets of plane and cross polarized-light photomicrographs will be provided per sample, with scale bars, depicting the detailed mineralogy, grain and pore size distribution, and texture of the rock.

Petrographic Examinations: \$250 per sample

Optical Microscopical examinations of thin sections in plane and cross polarized lights, and polished sections in reflected-light to determine detailed mineralogy, estimated modal (volume) proportions of different minerals, texture and microstructure, alteration, classification, and type of rock. Each report will include at least one set of photomicrographs per sample taken in plane and cross polarized-light modes with a high-resolution digital camera attached to a research-grade petrographic microscope. Price does not include the cost for sample preparation.

Supplemental Petrographic Services:

- Automated Point Counting: \$250 per sample
- XRD (Qualitative): \$250 per sample
- XRF/ICP (Major Elements): \$250 per sample
- SEM-EDS: \$250 per hour
- Image Analysis: \$200 per hour



Applied Petrographic Services, Inc.  
Berkshire Center, Suite 103B, 4727 Rt. 30, Greensburg, PA 15601  
724-834-3559 (Tel) 800-899-0522 (Toll Free) 724-834-3556 (Fax) [www.petrography.net](http://www.petrography.net)

